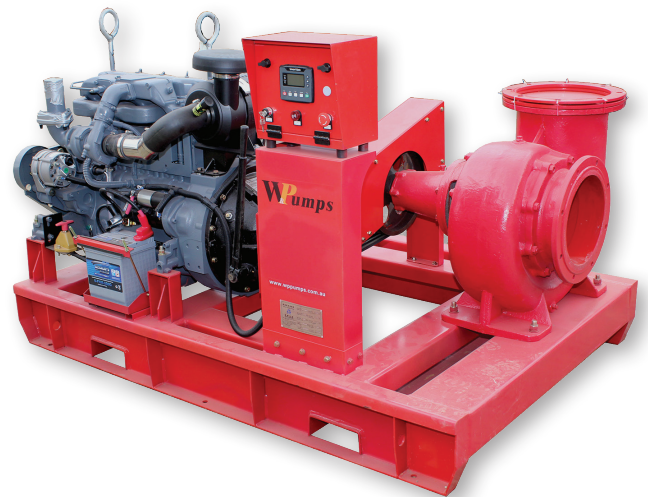
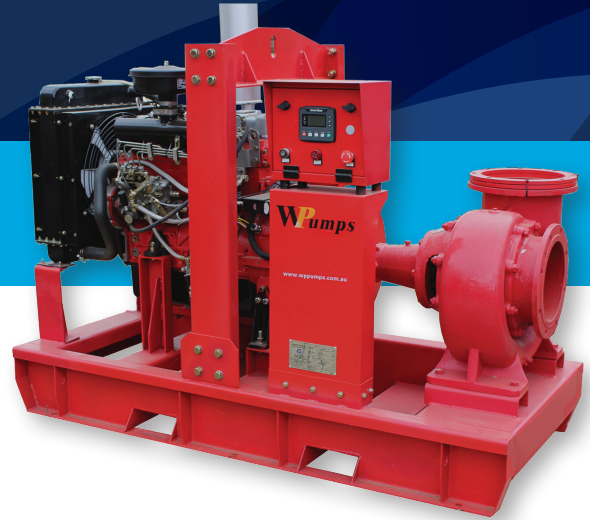


DIESEL ENGINE DRIVEN MIXED FLOW PUMPSETS

6" - 32"

W&P Pumps have been manufacturing and servicing Diesel Driven Mixed Flow Pumpsets for over 30 years, we are a family owned business operating in the Goulburn Valley, W&P Pumpsets are supplied all around Australia



STANDARD FEATURES

- Coupling/Belt Guard
- Rubber Mounted Radiator
- Speed Control
- Emergency Stop Button
- Bronze Impeller
- Mechanical Ceramic Seal
- Stainless Shaft
- NSK Bearings
- Marine Grade Paint
- Battery and Leads

OPTIONS

- Smartgen watchdog engine protection
- Can be built on a channel base forkable skid or trailer mounted
- Drive Options are V Belt, Direct Couple, Gearbox or Hydraulic
- Sideloading kit with WPT Clutch
- Lifting Points
- Vacuum Priming systems, electric or petrol
- Canopies Available
- Fuel Tank on stand (Self bunded also available)
- Fuel Tank built into base
- Foot valves and Check valves also available

**Legend
Engines**

**Legend
Pumps**



68 MCEWEN RD,
KYABRAM, VIC 3620

(03) 5853 2653

sales@wppumps.com

www.wppumps.com.au

/wppumps

PUMPSET SELECTIONS

Pump Model	Capacity		Head m	Pump Speed r/min	Efficiency %	Shaft Power Kw	Diesel Engine				NPSHR		
	Meg/day	m ³ /h					L/s	Drive Type	Make	Model	RPM	Fuel Consumption (L/H)	Power (Kw)
6HBC-35	5.35	223	62	1800	82	7.07	DC	Legend	480	1800	3.2	11	4
8HBC-35	8.64	360	100	1200	82	8.39	VB/GB	Legend	480	1500	3.2	11	4
	10.8	450	125	1450	82	14.9	DC	Legend	490	1450	5.4	18.5	5
	12	500	139	1600	82	20.2	DC	Legend	4102	1600	8.4	30	6.5
10HBC-30	10.8	450	125	980	84	10.29	VB/GB	Legend	490	1500	4.4	15	4
10HBC-40	10.8	450	125	980	78.4	7.5	VB/GB	Legend	480	1500	3.2	11	4
	15.6	650	181	1450	83.4	24.6	DC	Legend	4102	1450	8.4	30	6
	17.28	720	200	1600	83.4	32.8	DC	Legend	4102	1600	10.4	37	7.2
12HBC2-40	13.94	581	161	730	84	7.3	VB/GB	Legend	480	1500	3.2	11	3
	18.72	780	217	980	84	17.1	VB/GB	Legend	4102	1500	6.1	22	4
	24.84	1035	288	1300	84	41.4	VB/GB	John Deere	4045T2	1500	15.3	55	5
16HBC-40	30.24	1260	350	730	86	27.13	VB/GB	Legend	4102	1500	8.4	30	4
	40.61	1692	470	980	86	65.9	VB/GB	John Deere	6068T1	1500	19.5	75	5.5
16HBC-30	33.6	1400	389	730	86	44	VB/GB	John Deere	4045T2	1500	15.3	55	4
	45.12	1880	522	980	86	107.1	VB/GB	John Deere	4045T2	1500	15.3	55	5.5
20HBC-40	47.52	1980	550	580	87	38.4	VB/GB	John Deere	6068T3	1500	26.9	95	6
	59.81	2492	692	730	87	76.4	VB/GB	John Deere	6068T3	1500	26.9	95	5.5
26HBC-50	79.49	3312	920	485	85	54.1	VB/GB	John Deere	6068T1	1500	19.5	75	5
	96.77	4032	1120	590	85	97.5	VB/GB	John Deere	6068H2	1500	29	115	6
26HBC-40	81.6	3400	944	450	88	68.4	VB/GB	John Deere	6068T3	1500	26.9	90	5.3
	87.91	3663	1018	485	88	86.1	VB/GB	John Deere	6068H2	1500	26.1	100	5.5
	106.97	4457	1238	590	88	154.2	VB/GB	John Deere	6090H2	1500	44.4	180	6
26HBC-30	79.73	3322	923	490	88	193.3	VB/GB	John Deere	6068H2	1500	29	115	5.5
	96	4000	1111	590	88	173.3	VB/GB	John Deere	6090H2	1500	44.4	180	6
800HW-12	172.8	7200	2000	490	88	273	VB/GB	John Deere	6135H2	1500	84.2	315	5.5