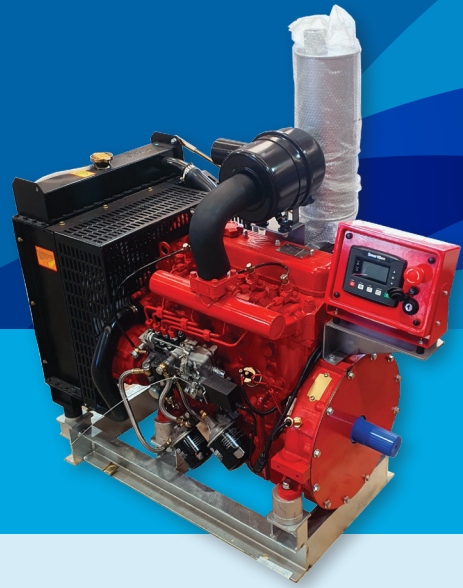


DIESEL ENGINES

LEGEND 490



LEGEND ENGINES are a reputable company whom sell Engines all over the globe, They provide engines for many different industries and applications, such as: Transport, Marine, Tractors, Generators, Fire Protection Systems and Mining.

W&P Pumps have been distributing & servicing Legend Engines all over the country for over 20 years.

OUR POWERPACKS ARE SUPPLIED WITH:

Galvanised Engine Base
Rubber mounted Radiator
Steel Fan Guard
Radiator with Stainless Steel end tanks
12 Volt stop solenoid
Vernia Type Throttle control
Battery leads
Battery
Emergency Stop Switch
Optional Smartgen or Murphy Engine Protection with stand
3m long Wiring Loom for optional remote mount of Engine Protection Panel
40mm Stub flange adaptor mounted to flywheel & flywheel guard/cover
Dry Type Air Filter
Muffler
Exhaust manifold
Heat Shield
Electric Start
Alternator
Spin on Filters
Marine Grade Paint

OPTIONS

Sideload Kit / WPT Clutch
Hydraulic drive kit
Gearbox Drive / PTO Shaft Drive

TECHNICAL SPECIFICATIONS

Cylinders:	4
Bore:	90mm
Stroke:	100mm
Compression Ratio:	18
Total Displacement:	2.54L
Firing Order:	1-3-4-2
Rated Power @ 1500RPM:	17kW
Rated Power @ 1800RPM:	20kW
Min. specific fuel consumption at full load (g/kW.h):	<247.5
Cooling Method:	Forced Watercooled
Starting Method:	Electric
Net Mass:	230
Overall Dimensions	716*530*670mm



68 MCEWEN RD,
KYABRAM, VIC 3620

(03) 5853 2653

@ sales@wppumps.com

www.wppumps.com.au

f /wppumps